



GAT MONTHLY MEMBERSHIP PROGRESS REPORT

Results as of: 1/31/2022

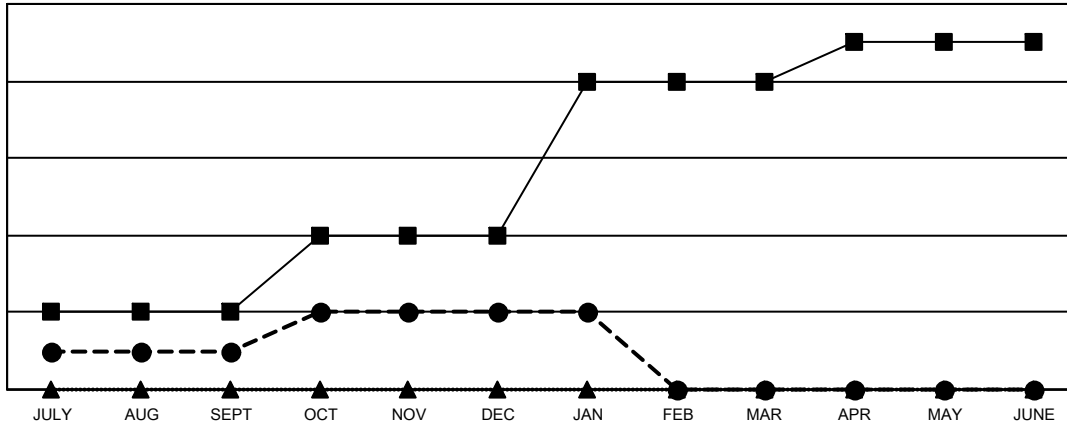
Multiple District 9

LOCATION: IOWA

Clubs			
RESULTS FOR 2021-2022			
QUARTER	NEW CLUB GOAL	NEW CLUBS	DROPPED CLUBS
JULY/AUG/SEPT	2	1	7
OCT/NOV/DEC	2	1	3
JAN/FEB/MAR	4	0	2
APR/MAY/JUNE	1	0	0

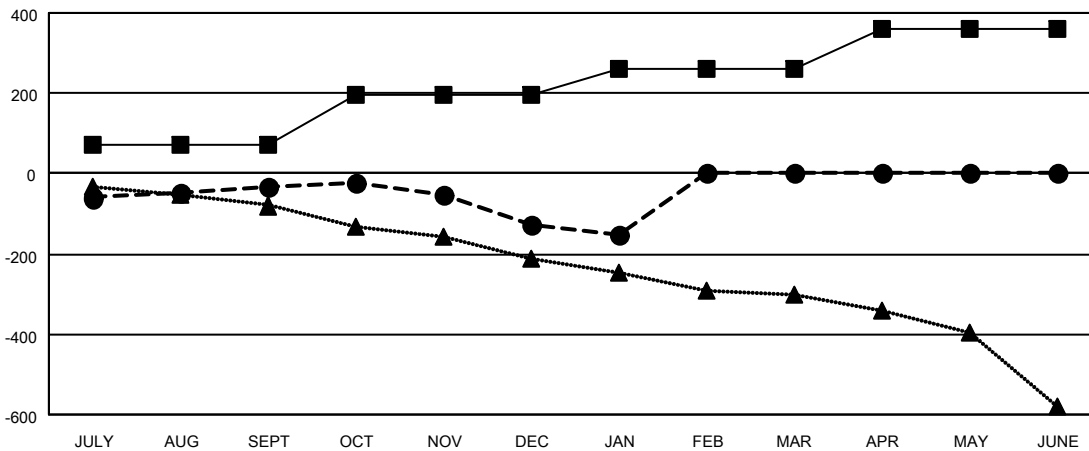
Members			
RESULTS FOR 2021-2022			
QUARTER	MEMBER GROWTH NET GOAL	MEMBER GROWTH ACTUAL	DROPPED MEMBERS ACTUAL (including transfers)
JULY/AUG/SEPT	70	185	205
OCT/NOV/DEC	125	161	227
JAN/FEB/MAR	65	45	66
APR/MAY/JUNE	100	0	0

GOALS AND ACTUAL NEW CLUBS CUMULATIVE



- - CURRENT YEAR GOALS FOR NEW CLUBS
- - CURRENT YEAR ACTUAL NEW CLUBS
- ▲ - LAST YEAR ACTUAL NEW CLUBS

GOALS AND ACTUAL MEMBERS CUMULATIVE



- - MEMBER GROWTH NET GOAL
- - MEMBER GROWTH ACTUAL
- ▲ - LAST YEAR MEMBERSHIP ACTUAL

DROPPED CLUBS: 12	133 CLUBS OF 303 ADDED 1 OR MORE NEW MEMBERS	GENDER DISTRIBUTION
DROPPED MEMBERS	CLICK HERE FOR CUMULATIVE MEMBERSHIP DATA	MALE 5,080 (72.53%)
DECEASED 81		FEMALE 1,923 (27.46%)
CLUB CANCELLED 39		NON BINARY 1 (0.01%)
OTHER 378		PREFER NOT TO ANSWER 0 (0.00%)
TOTAL 498		TOTAL FAMILY UNIT MEMBERS 1,468
		FAMILY MEMBERS PAYING HALF DUES 747